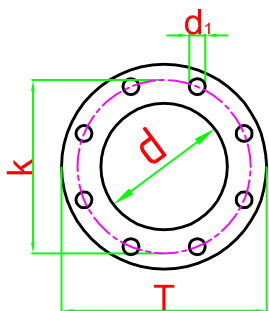
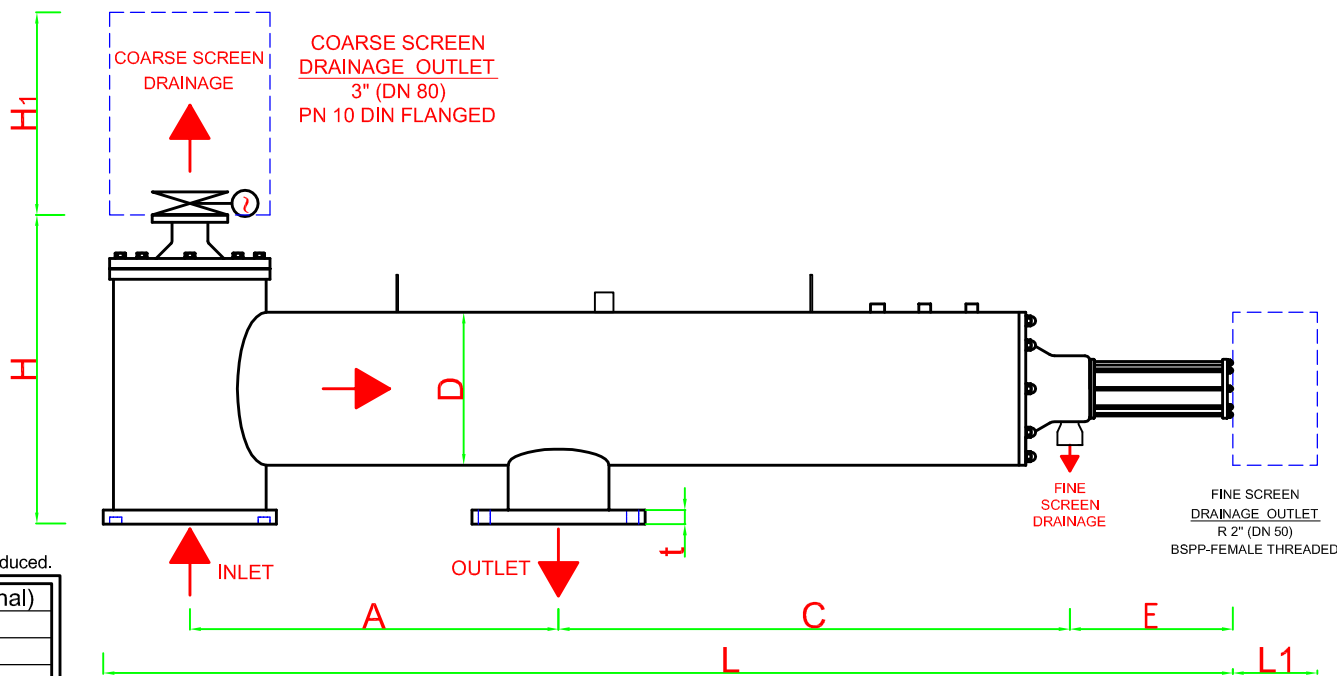


## FILTERNOX OPTIMIST MODELS TECHNICAL SPECIFICATIONS



n: Number of holes



For high pressure, high temperature and different materials, custom made filters can be produced.

Body Material:	AISI 304L(316L optional)
Screen Material:	AISI 316L
Max. Operating Pressure:	10 bar
Min. Inlet Pressure Required During Back-Flush:	2 bar
Max. Operating Temperature:	60 °C
Headloss at Max. Flow Rate:	0.2 bar
Approximate Back-Flush Time:	20-30 sec. max.
Approximate Back-Flush Water Consumption:	150-200 lt/back-flush
Coarse Screen Back-Flush Outlet:	Automatic valve
Fine Screen Control System:	Electric
Coarse Screen Control System:	Timer

FILTER MODELS	INLET/OUTLET		FLANGE SIZES ND 10 - DIN 2576						A min.	C	D	E	H	H <sub>1</sub>	L	L <sub>1</sub>	WEIGHT(kg)		MAX. FLOW RATE m <sup>3</sup> /h	SCREEN AREA cm <sup>2</sup>
	inch	DN	d mm	T	k	d <sub>1</sub>	n	t									FULL	EMPTY		
KFH 112406	6	150	168.2	285	240	22	8	22	900	820	12"	340	660	865	2225	1300	360	165	180	4800
KFH 112606	6	150	168.2	285	240	22	8	22	900	1220	12"	340	660	865	2625	1700	410	180	200	7200
KFH 112608	8	200	219.1	340	295	22	8	24	900	1220	12"	340	680	865	2625	1700	420	185	320	7200
KFH 112610	10	250	273.1	395	350	22	12	26	900	1220	12"	340	705	835	2655	1700	430	190	400	7200

All dimensions are in millimeters.

Antel-Filternox reserves the rights to modify any of the technical information in this document without prior notification.  
All the rights for this drawing are belonging to ANTEL TREATMENT SYSTEM CONS.IND&COM.CO.INC.It can not be copied or given to the persons without permission.