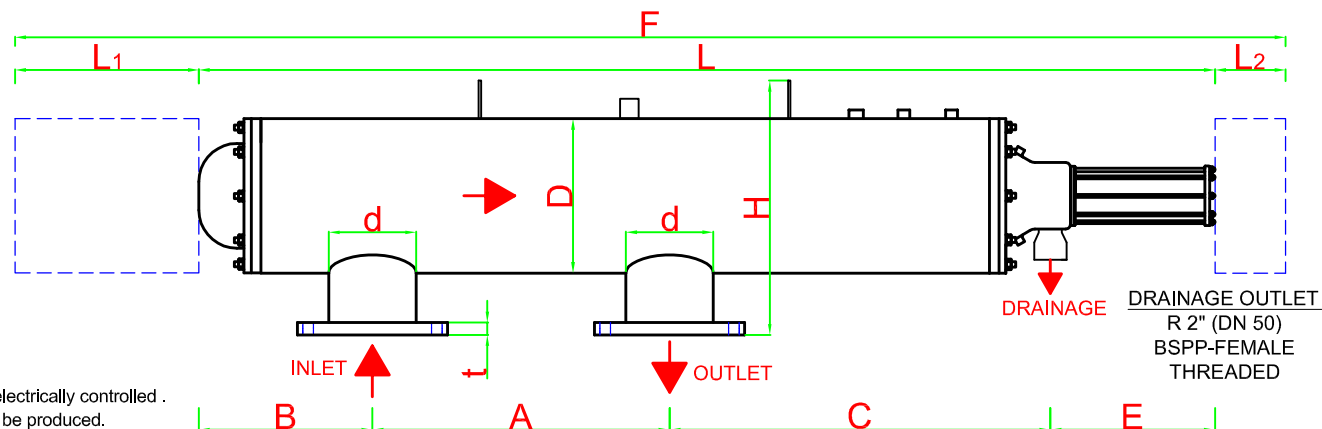
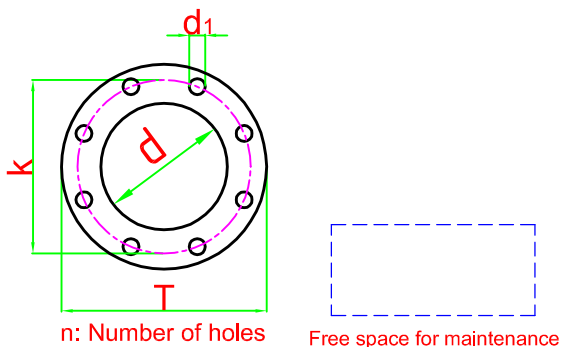


FILTERNOX PFH MODELS TECHNICAL SPECIFICATIONS



Two types of back-flush controls are optionally manufactured, they are hydraulic or electrically controlled. For high pressure, high temperature and different materials, custom made filters can be produced.

Body Material:	AISI 304L (316L optional)
Screen Material:	AISI 316L
Max. Operating Pressure:	10 bar
Min. Inlet Pressure Required During Back-Flush:	2 bar
Max. Operating Temperature:	60 °C
Headloss at Max. Flow Rate:	0.2 bar
Approximate Back-Flush Time:	20-30 sec. max.
Approximate Back-Flush Water Consumption:	150-200 lt/back-flush
Control System:	Hydraulic or Electric

FILTER MODELS	INLET/OUTLET		FLANGE SIZES ND 10 - DIN 2576						A min.	L	L ₁	L ₂	F	B	C	E	D	H	WEIGHT(kg)		MAX. FLOW RATE m ³ /h	SCREEN AREA cm ²
	inch	DN	d mm	T	k	d ₁	n	t											FULL	EMPTY		
PFH 110404	4	100	114.3	220	180	18	8	20	900	1970	1300	500	3770	280	455	340	10"	455	175	95	100	4800
PFH 110604	4	100	114.3	220	180	18	8	20	900	2445	1700	500	4645	320	895	340	10"	455	220	110	100	7200
PFH 110406	6	150	168.2	285	240	22	8	22	900	1970	1300	500	3770	280	455	340	10"	455	190	105	120	4800
PFH 110606	6	150	168.2	285	240	22	8	22	900	2445	1700	500	4645	315	890	340	10"	455	235	120	140	7200
PFH 112406	6	150	168.2	285	240	22	8	22	900	2055	1300	500	3855	320	495	340	12"	535	275	115	180	4800
PFH 112606	6	150	168.2	285	240	22	8	22	900	2585	1700	500	4785	390	960	340	12"	530	300	135	200	7200
PFH 112608	8	200	219.1	340	295	22	8	24	900	2585	1700	500	4785	390	960	340	12"	530	310	140	320	7200
PFH 112610	10	250	273.1	395	350	22	12	26	900	2585	1700	500	4785	390	960	340	12"	535	325	150	400	7200

All dimensions are in millimeters.

Antel-Filternox reserves the rights to modify any of the technical information in this document without prior notification. All the rights for this drawing are belonging to ANTEL TREATMENT SYSTEM CONS.IND&COM.CO.INC.It can not be copied or given to the persons without permission.