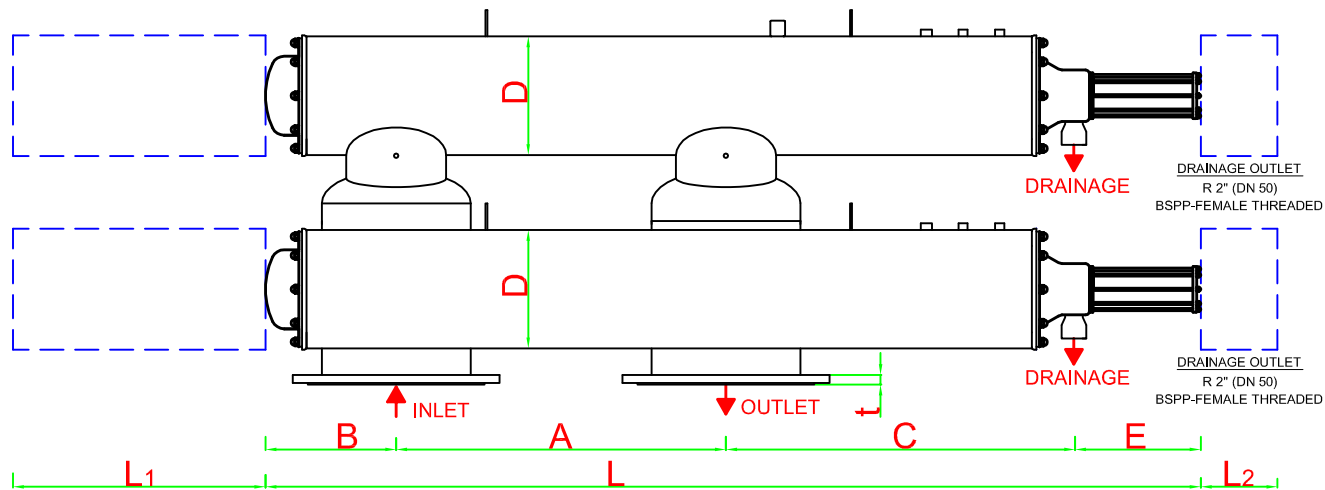
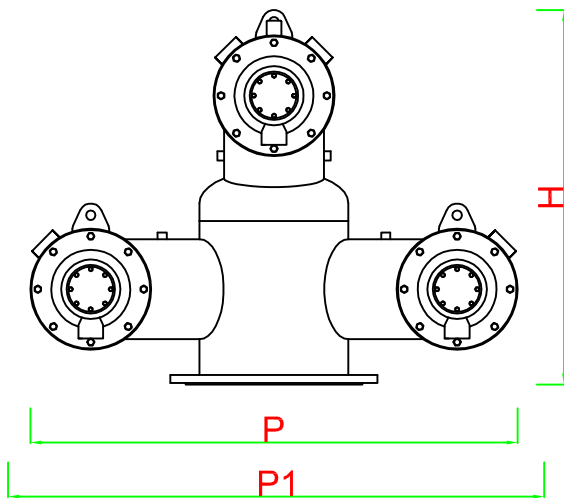
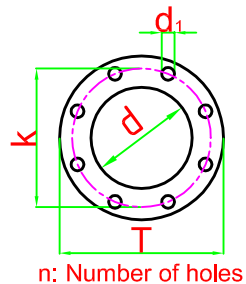


FILTERNOX TRIPLET MODELS TECHNICAL SPECIFICATIONS

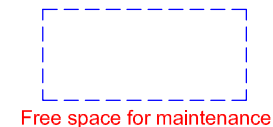


For high pressure, high temperature and different materials, custom made filters can be produced.

Body Material:	AISI 304L (316L optional)
Screen Material:	AISI 316L
Max. Operating Pressure:	10 bar
Min. Inlet Pressure Required During Back-Flush:	2 bar
Max. Operating Temperature:	60 °C
Headloss at Max. Flow Rate:	0.2 bar
Approximate Back-Flush Time:	60-80 sec. max.
Approximate Back-Flush Water Consumption:	450-600 lt/back-flush
Control System:	Hydraulic or Electric



n: Number of holes



FILTER MODELS	INLET/OUTLET		FLANGE SIZES ND 10 - DIN 2576						A min.	L	L ₁	L ₂	B	C	E	D	H	P	P ₁	WEIGHT(kg)		MAX. FLOW RATE m ³ /h	SCREEN AREA cm ²
	inch	DN	d mm	T	k	d ₁	n	t												FULL	EMPTY		
PTR 310608	8	200	219.1	340	295	22	8	24	900	2450	1700	500	320	893	340	10"	900	1025	1825	835	350	420	21600
PTR 310610	10	250	273.1	395	350	22	12	26	900	2450	1700	500	320	960	340	10"	1000	1025	1825	865	370	750	21600
PTR 312612	12	300	323.9	445	400	22	12	26	900	2585	1700	500	390	893	340	12"	1020	1125	1925	995	425	1000	21600
PTR 312614	14	350	355.6	505	460	22	16	28	900	2585	1700	500	390	960	340	12"	1020	1125	1925	1020	440	1250	21600
PTR 312616	16	400	406.4	565	515	26	16	32	900	2585	1700	500	390	960	340	12"	1025	1175	1975	1075	480	1500	21600

All dimensions are in millimeters.

Antel-Filternox reserves the rights to modify any of the technical information in this document without prior notification.
All the rights for this drawing are belonging to ANTEL TREATMENT SYSTEM CONS.IND&COM.CO.INC.It can not be copied or given to the persons without permission.