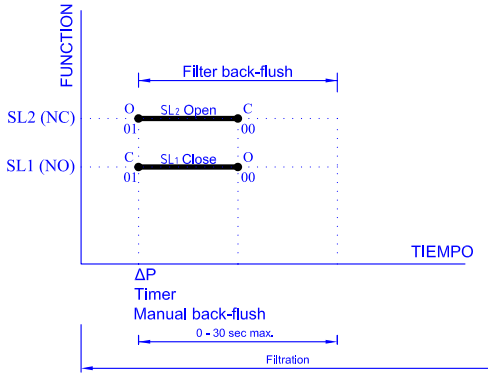
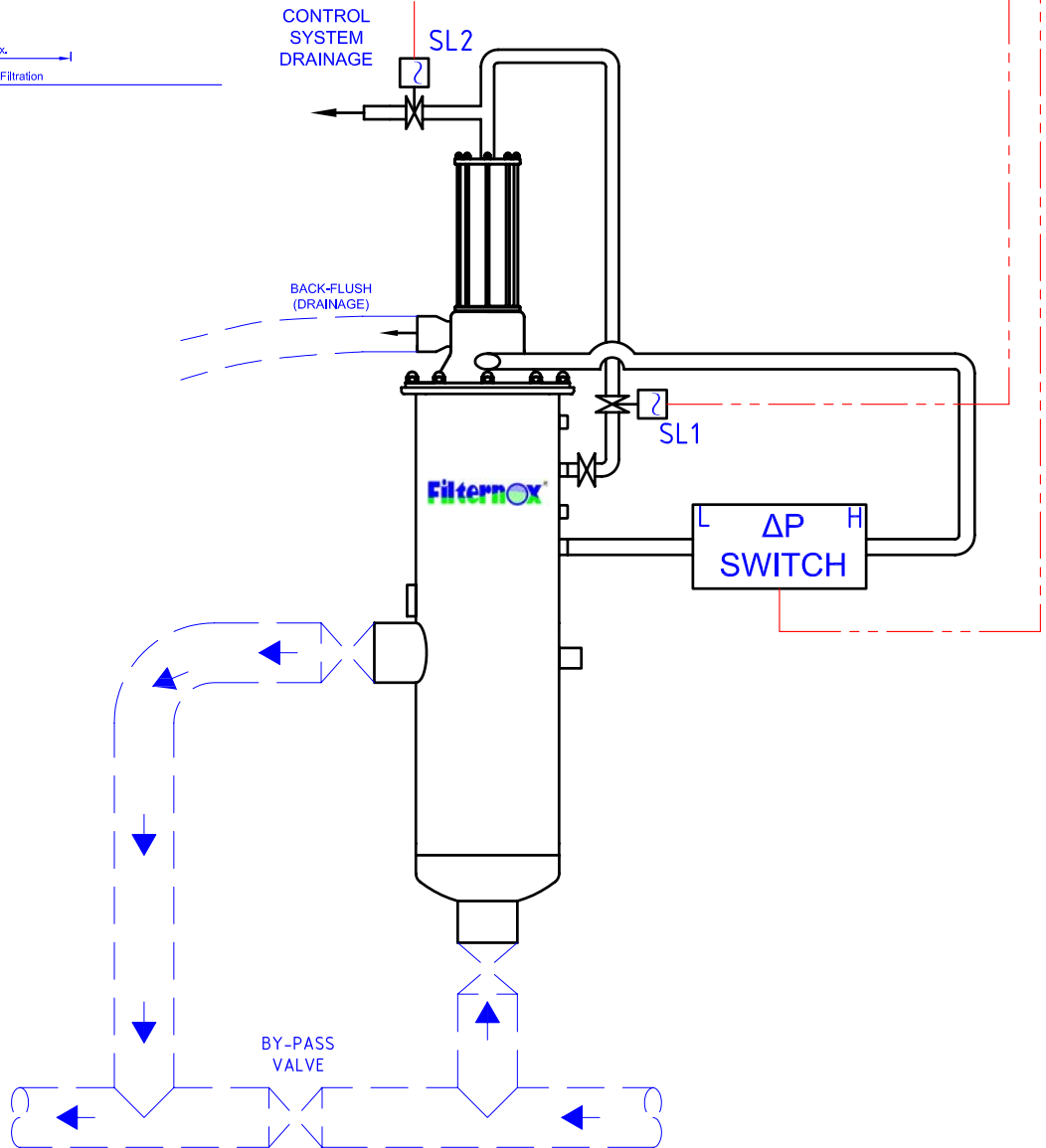


- 01 -Energized
- 00 -De-energized
- SL1 -Normally open, 24V D.C.  
3/8" solenoid valve (N.O.)
- SL2 -Normally close 24V D.C.  
3/8" solenoid valve (N.C.)



## CONTROL PANEL



TYPICAL INSTALLATION AND BASIC ELECTRIC CONTROL SYSTEM CONNECTION DIAGRAM

**Filternox**<sup>®</sup>  
AUTOMATIC SELF-CLEANING FILTER

MODEL: SPT