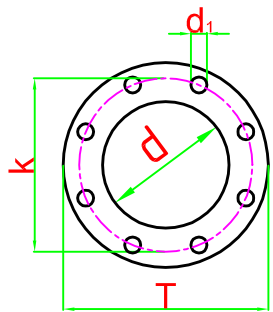
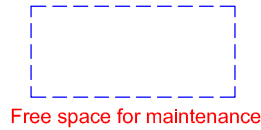


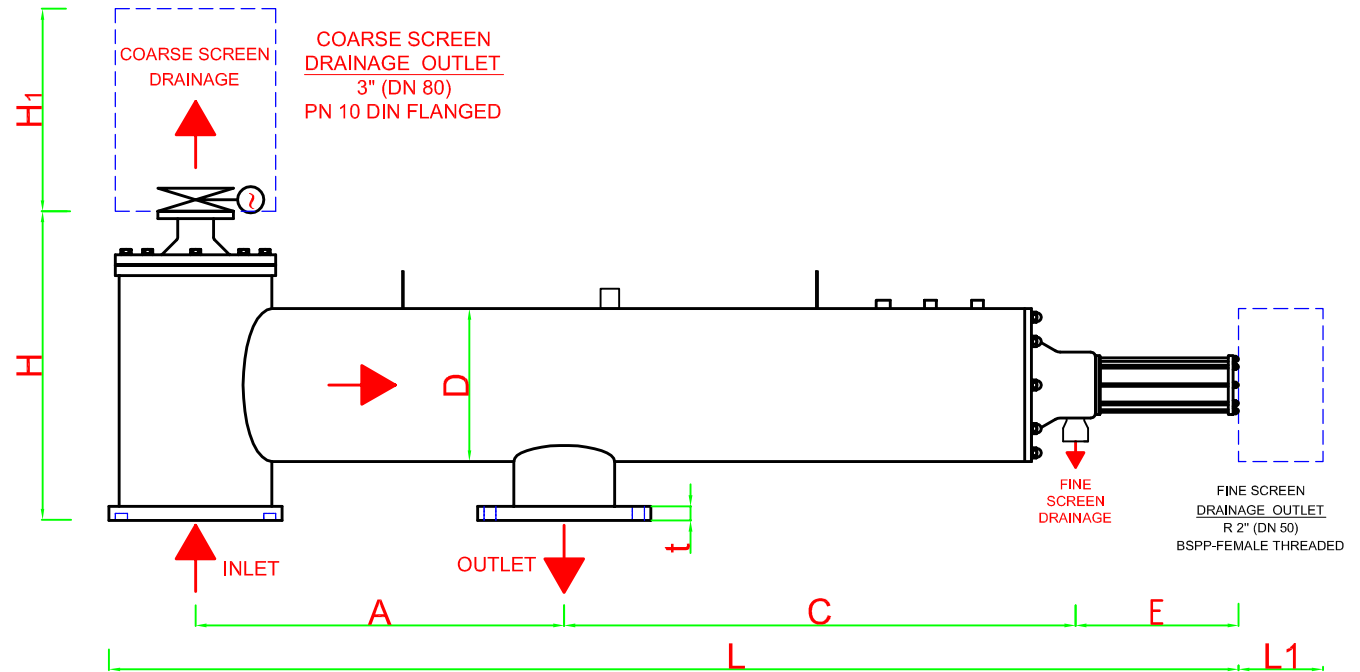
FILTERNOX OPTIMIST MODELS TECHNICAL SPECIFICATIONS



n: Number of holes



Free space for maintenance



| FILTER MODELS | INLET/OUTLET | | FLANGE SIZES ND 10 - DIN 2576 | | | | | | A min. | C | D | E | H | H ₁ | L | L ₁ | WEIGHT(kg) | | MAX. FLOW RATE m ³ /h | SCREEN AREA cm ² |
|---------------|--------------|-----|-------------------------------|-----|-----|----------------|----|----|-----------|------|-----|-----|-----|----------------|------|----------------|------------|-------|--|--------------------------------|
| | inch | DN | d mm | T | k | d ₁ | n | t | | | | | | | | | FULL | EMPTY | | |
| KFH 112406 | 6 | 150 | 168.2 | 285 | 240 | 22 | 8 | 22 | 900 | 820 | 12" | 340 | 660 | 865 | 2225 | 1300 | 360 | 165 | 180 | 4800 |
| KFH 112606 | 6 | 150 | 168.2 | 285 | 240 | 22 | 8 | 22 | 900 | 1220 | 12" | 340 | 660 | 865 | 2625 | 1700 | 410 | 180 | 200 | 7200 |
| KFH 112608 | 8 | 200 | 219.1 | 340 | 295 | 22 | 8 | 24 | 900 | 1220 | 12" | 340 | 680 | 865 | 2625 | 1700 | 420 | 185 | 320 | 7200 |
| KFH 112610 | 10 | 250 | 273.1 | 395 | 350 | 22 | 12 | 26 | 900 | 1220 | 12" | 340 | 705 | 835 | 2655 | 1700 | 430 | 190 | 400 | 7200 |

All dimensions are in millimeters.

Anfel-Filternox reserves the rights to modify any of the technical information in this document without prior notification.
All the rights for this drawing are belonging to ANTEL TREATMENT SYSTEM CONS.IND&COM.CO.INC.It can not be copied or given to the persons without permission.