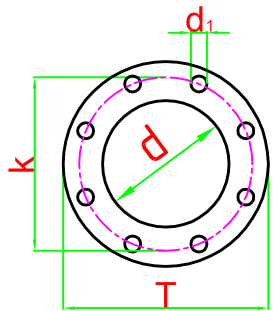
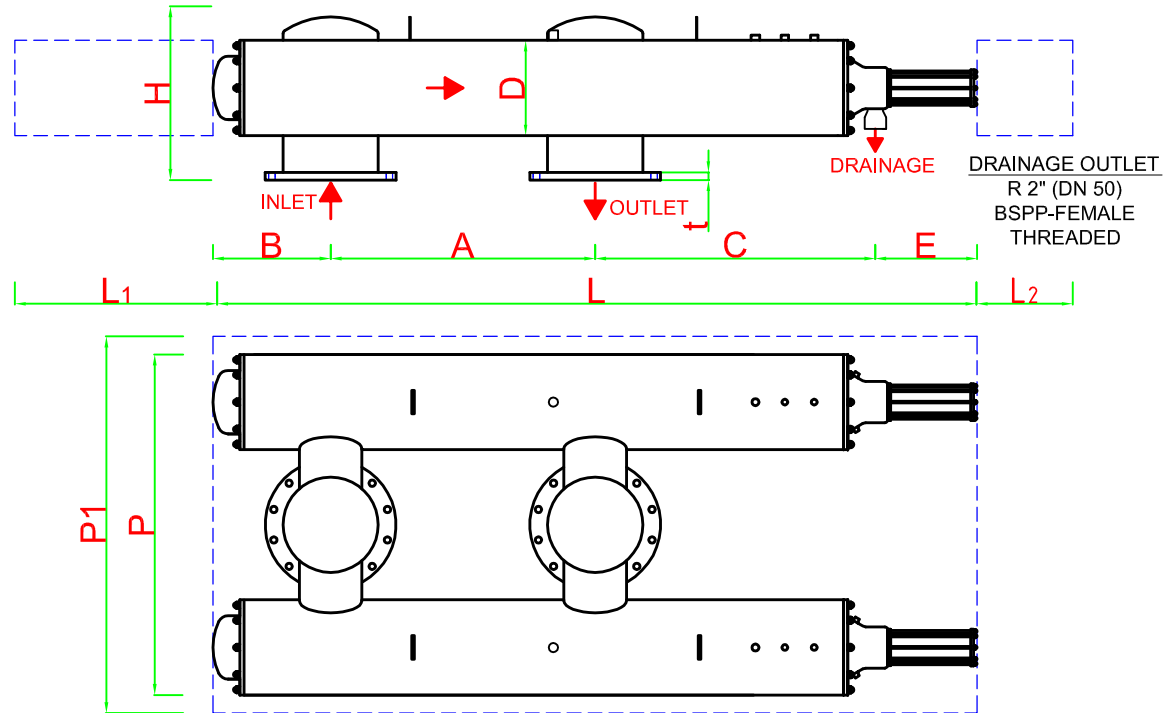
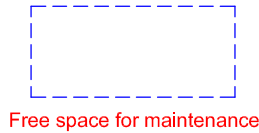


FILTERNOX TWIN MODELS TECHNICAL SPECIFICATIONS



n: Number of holes



FILTER MODELS	INLET/OUTLET		FLANGE SIZES ND 10 - DIN 2576						A min.	L	L ₁	L ₂	B	C	E	D	H	P	P ₁	WEIGHT(kg)		MAX. FLOW RATE m ³ /h	SCREEN AREA cm ²
	inch	DN	d mm	T	k	d ₁	n	t												FULL	EMPTY		
PTW 210406	6	150	168.2	285	240	22	8	22	900	1970	1300	500	280	455	340	10"	430	1025	1825	510	210	200	9600
PTW 210606	6	150	168.2	285	240	22	8	22	900	2450	1700	500	320	895	340	10"	430	1025	1825	615	240	250	14400
PTW 210408	8	200	219.1	340	295	22	8	24	900	2055	1300	500	280	455	340	10"	490	1075	1875	525	220	320	9600
PTW 210608	8	200	219.1	340	295	22	8	24	900	2445	1700	500	315	890	340	10"	490	1075	1875	630	250	350	14400
PTW 212408	8	200	219.1	340	295	22	8	24	900	2055	1300	500	320	495	340	12"	515	1125	1925	580	250	380	9600
PTW 212608	8	200	219.1	340	295	22	8	24	900	2585	1700	500	385	960	340	12"	515	1125	1925	675	280	400	14400
PTW 212610	10	250	273.1	395	350	22	12	26	900	2585	1700	500	385	960	340	12"	540	1175	1975	695	290	500	14400
PTW 212612	12	300	323.9	445	400	22	12	26	900	2585	1700	500	385	960	340	12"	550	1225	2025	710	300	750	14400
PTW 212614	14	350	355.6	505	460	22	16	28	900	2585	1700	500	385	960	340	12"	610	1325	2125	750	330	1000	14400

All dimensions are in millimeters.

Antel-Filternox reserves the rights to modify any of the technical information in this document without prior notification.
All the rights for this drawing are belonging to ANTEL TREATMENT SYSTEM CONS.IND&COM.CO.INC.It can not be copied or given to the persons without permission.